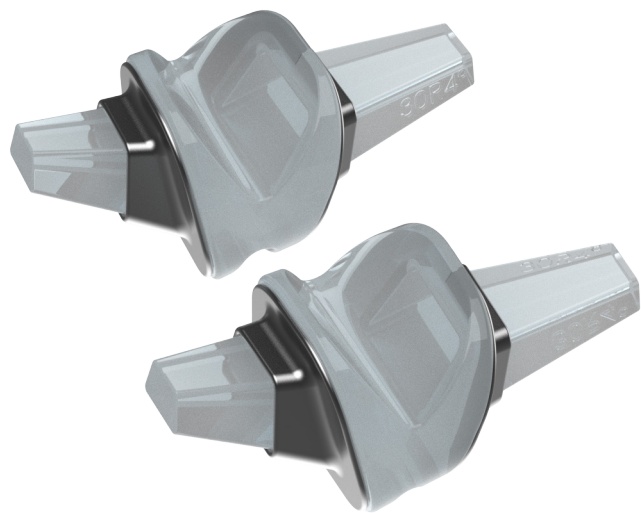


SilkToe®

New generation flexible silicone spacer for first metatarsophalangeal (1st MTP) joint arthroplasty.





The BRM SilkToe® Implant is a new generation flexible silicone spacer for first metatarsophalangeal (1st MTP) joint arthroplasty.

The implant is available in five sizes in both left and right orientation to preserve valgus alignment. It features an anatomically contoured hinge to allow for improved range of motion.

The implant’s design features an angled resection that preserves the flexor hallucis brevis tendon and titanium grommets to allow for ingrowth and improve stability.

Item #	Description
BRDNEWP2020L	Silktoe Spacer - Size 20 Left
BRDNEWP2020R	Silktoe Spacer - Size 20 Right
BRDNEWP3030L	Silktoe Spacer - Size 30 Left
BRDNEWP3030R	Silktoe Spacer - Size 30 Right
BRDNEWP3535L	Silktoe Spacer - Size 35 Left
BRDNEWP3535R	Silktoe Spacer - Size 35 Right
BRDNEWP4040L	Silktoe Spacer - Size 40 Left
BRDNEWP4040R	Silktoe Spacer - Size 40 Right
BRDNEWP5050L	Silktoe Spacer - Size 50 Left
BRDNEWP5050R	Silktoe Spacer - Size 50 Right

The SilkToe is a product manufactured by BRM Extremities. For more information and indications for use visit www.brm-extremities.com

This content is provided as an educational tool only and is not meant as medical advice in the usage of specific BioPro products. A healthcare professional must use their professional judgment in making any final determinations in product usage and technique. The product’s Instructions for Use, should always be reviewed prior to surgery. Postoperative management is patient-specific and dependent on the treating professional’s assessment. Individual results will vary and not all patients will experience the same postoperative activity level or outcomes. This information does not constitute medical, legal, or any other type of professional advice and should not be relied upon as such. It is not to be redistributed, duplicated, or disclosed without the express written consent of BioPro, Inc.

