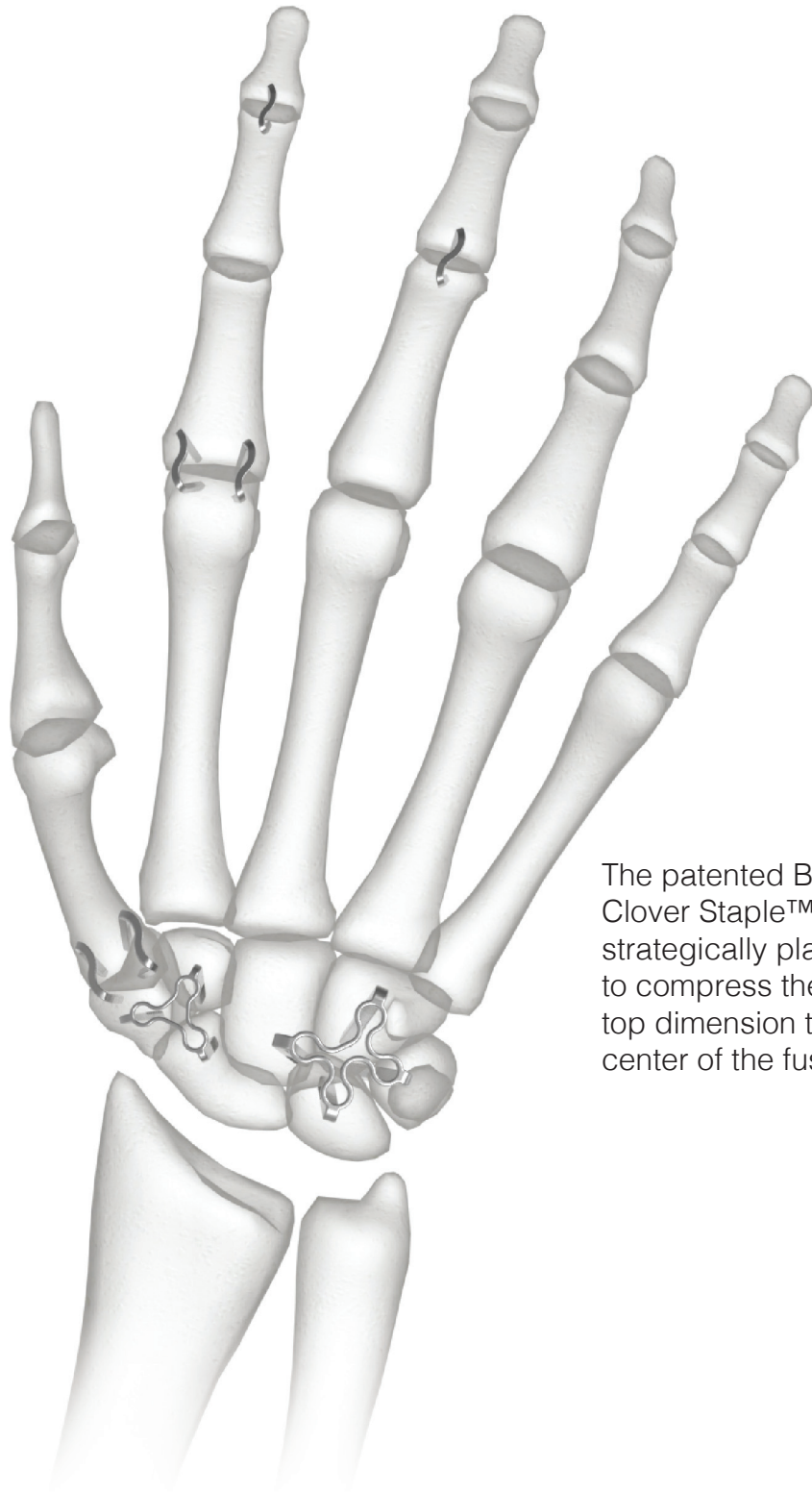


Nitinol Staple Fixation

35 staple options for a variety of hand & wrist procedures.

The BioPro® Memory Staple features an S-bridge design to provide uniform compression and allow for fast insertion.



The patented BioPro® Clover Staple™ uses strategically placed bends to compress the legs and top dimension towards the center of the fusion site.

Applications



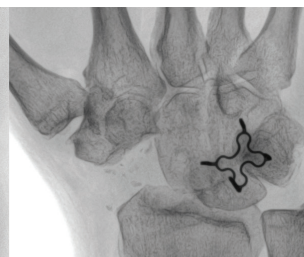
Metacarpal/Capitate Fusion
Memory Staple



Carpometacarpal Fusion
Memory Staple



Radioscapholunate Fusion
Clover Staple™



Four Corner Fusion
Clover Staple™



Scaphotrapeziotrapezoid Fusion
Clover Staple™



- 3 and 4-leg designs specially designed for intercarpal fusions
- Centralized compression to help speed the fusion process
- 1mm profile requires minimal bone removal and reduces risk of radial impingement



- 17 standard sizes with leg lengths as short as 5mm
- S-bridge design ensures even compression across the fusion site
- Easy to use instrumentation for fast and direct visual insertion

Ordering Information

| Item # | System | Top Width | Leg Length | Wire Size |
|--------|--------|-----------|------------|-----------|
| 18259 | 4-Leg | 10x8mm | 10mm | 1.5 |
| 18260 | 4-Leg | 10x8mm | 12.5mm | 1.5 |
| 18261 | 4-Leg | 10x8mm | 15mm | 1.5 |
| 18062 | 4-Leg | 14x12mm | 10mm | 1.5 |
| 18063 | 4-Leg | 14x12mm | 12.5mm | 1.5 |
| 18064 | 4-Leg | 14x12mm | 15mm | 1.5 |
| 18065 | 4-Leg | 18x16mm | 10mm | 1.5 |
| 18066 | 4-Leg | 18x16mm | 12.5mm | 1.5 |
| 18067 | 4-Leg | 18x16mm | 15mm | 1.5 |
| 18262 | 3-Leg | 10x8mm | 10mm | 1.5 |
| 18263 | 3-Leg | 10x8mm | 12.5mm | 1.5 |
| 18264 | 3-Leg | 10x8mm | 15mm | 1.5 |
| 18068 | 3-Leg | 14x12mm | 10mm | 1.5 |
| 18069 | 3-Leg | 14x12mm | 12.5mm | 1.5 |
| 18070 | 3-Leg | 14x12mm | 15mm | 1.5 |
| 18071 | 3-Leg | 18x16mm | 10mm | 1.5 |
| 18072 | 3-Leg | 18x16mm | 12.5mm | 1.5 |
| 18073 | 3-Leg | 18x16mm | 15mm | 1.5 |

| Item # | Bridge Width | Leg Length | Wire Size |
|--------|--------------|------------|-----------|
| 17637 | 7mm | 5mm | 1.2mm |
| 17628 | 7mm | 5mm | 1.5mm |
| 17638 | 9mm | 7mm | 1.2mm |
| 17629 | 9mm | 7mm | 1.5mm |
| 17630 | 11mm | 8mm | 1.5mm |
| 17631 | 11mm | 10mm | 1.5mm |
| 17634 | 11mm | 15mm/13mm | 1.5mm |
| 17635 | 11mm | 17mm/15mm | 1.5mm |
| 17636 | 11mm | 19mm/17mm | 1.5mm |
| 17632 | 13mm | 10mm | 1.5mm |
| 17633 | 15mm | 12mm | 1.5mm |
| 17625 | 15mm | 12mm | 2.0mm |
| 17626 | 18mm | 18mm/15mm | 2.0mm |
| 17627 | 20mm | 20mm | 2.0mm |
| 17622 | 20mm | 20mm | 2.0x3.0mm |
| 17623 | 25mm | 22mm | 2.0x3.0mm |
| 17624 | 30mm | 30mm | 2.0x3.0mm |

Visit www.bioproimplants.com or call us at (810) 982-7777 to schedule a surgery.



+1-810-982-7777
info@bioproimplants.com
2929 Lapeer Road
Port Huron, MI 48060

