

Case Study

Cartiva Revision with BioPro® First MPJ Hemi

History

- 75-year-old female
- Diabetes (well controlled), Hypertension
- Severe unrelenting pain after one year of first metatarsophalangeal joint arthroplasty with Cartiva implant.

Physical Examination

Physical examination revealed a well healed surgical scar on right first metatarsophalangeal joint. Severe pain on palpation and during range of motion was noted. There was less than 5 degrees of motion with severe pain, creating difficulty with ambulation and shoe wear.

Radiographic Examination

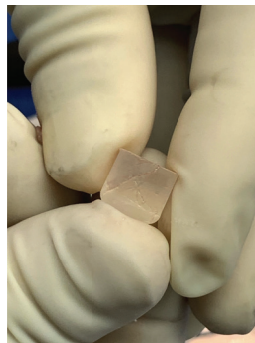
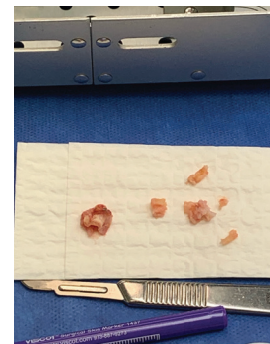
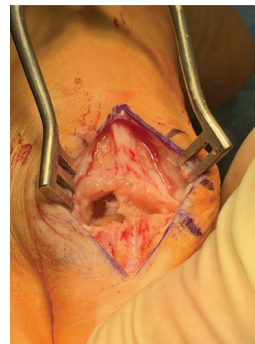
Radiographic examination revealed collapse of Cartiva implant, cystic changes can be seen; with severe asymmetrical narrowing of the joint. The patient was given the choice of first mpj arthrodesis or Hemiarthroplasty with the BioPro First MPJ Hemi.

Surgical Notes

The subluxed Cartiva implant was removed, the void was filled with bone graft and slight remodeling of the metatarsal head was performed. A small portion (4-5mm) of the proximal phalanx was resected to allow for implantation of a BioPro Porous Coated First MPJ Hemi Implant.

Follow-Up

The patient had an uneventful post-op course and her pain was completely resolved. Range of motion was approximately 20 degrees dorsiflexion and 5 degrees plantarflexion with no pain. At 1-year post-op the patient is very happy and could ambulate without any difficulty.



Contributed by:

Fred Rahimi, D.P.M.
First Step Foot Care
Des Plaines, IL

This content is provided as an educational tool only and is not meant as medical advice in the usage of specific BioPro products. A healthcare professional must use their professional judgment in making any final determinations in product usage and technique. The product's Instructions for Use, should always be reviewed prior to surgery. Postoperative management is patient-specific and dependent on the treating professional's assessment. Individual results will vary and not all patients will experience the same postoperative activity level or outcomes. This information does not constitute medical, legal, or any other type of professional advice and should not be relied upon as such. It is not to be redistributed, duplicated, or disclosed without the express written consent of BioPro, Inc.



BioPro, Inc.
2929 Lapeer Road, Port Huron, MI 48060, USA
info@bioproimplants.com | 1-810-982-7777
www.bioproimplants.com

BIOLOGICALLY ORIENTED PROSTHESES
BIO PRO

