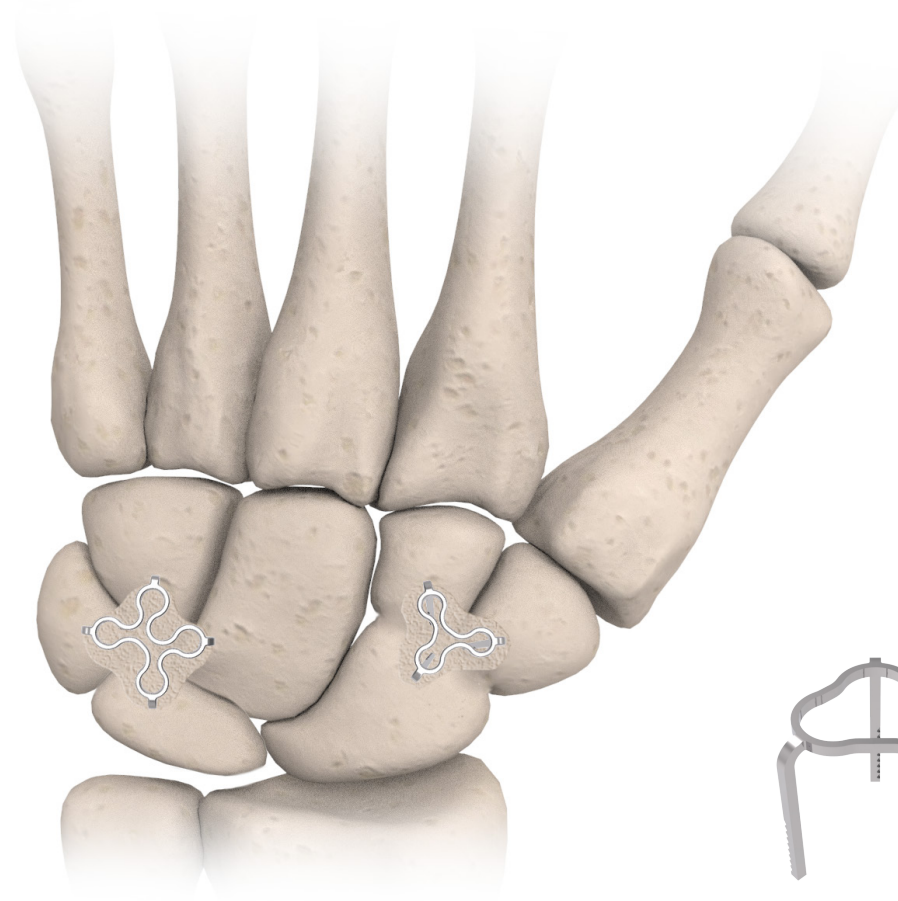


Clover Staple™

A trusted carpal fusion solution.^{1,2}

Patent # 8062297

The BioPro® Clover Staple is a Nitinol device that activates at patient body temperature, pulling all legs towards the center of the fusion site and offering uniform compression to help speed the fusion process.



3-Leg
Clover Staple



4-Leg
Clover Staple

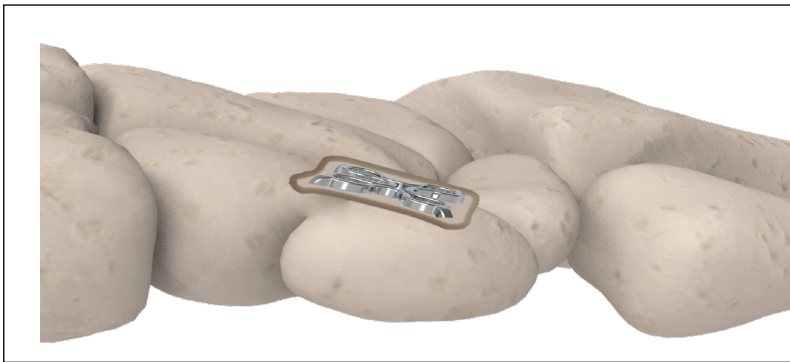
Clover Staple

A trusted carpal fusion solution.

- Improved range of motion^{1,2}
- Cost effective compared to circular plates or multiple 2-leg staples
- Rapid time to union^{1,2}

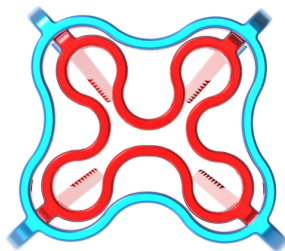
BioPro Clover Staple vs Circular Plates

- Continual compression
- Reduced hardware
- Minimal resection
- No implant impingement



Each staple is available in 9 standard sizes, offering a surgeon flexibility in the operating room. The staple sits recessed below the dorsal surface, preventing impingement during dorsiflexion.

Top view



Side view



When exposed to the activation temperature, the staple will close, creating 4-6 lbs of compressive force.

- Not activated
- Activated

Visit www.bioproimplants.com or call us at (810) 982-7777

1. John Faillace, MD . Limited Wrist Fusion Using a New Memory Staple. [unpublished raw data]
 2. John Faillace, MD., Dr. Steve Boyea. NiTiNOL Low Profile Multi-pronged Memory Metal Staple in Small Bone Fusion. Presented at the 72nd Annual Meeting of the ASSH. San Francisco. September 2017



+1-810-982-7777
 info@bioproimplants.com
 2929 Lapeer Road
 Port Huron, MI 48060

