

Case Study

Cartiva Revision with BioPro® First MPJ Hemi

History

- 75-year-old female
- Diabetes (well controlled), Hypertension
- Severe unrelenting pain after one year of first metatarsophalangeal joint arthrodesis with Cartiva implant.

Physical Examination

Physical examination revealed a well healed surgical scar on right first metatarsophalangeal joint. Severe pain on palpation and during range of motion was noted. There was less than 5 degrees of motion with severe pain, creating difficulty with ambulation and shoe wear.

Radiographic Examination

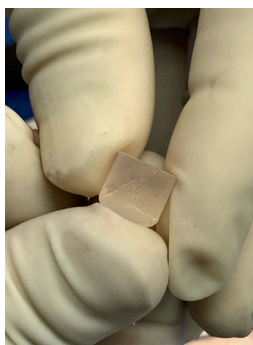
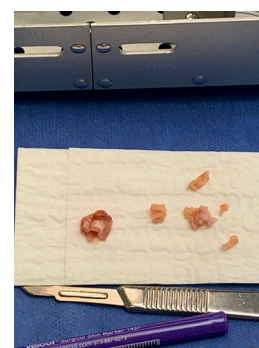
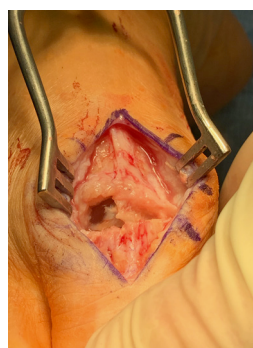
Radiographic examination revealed collapse of Cartiva implant, cystic changes can be seen; with severe asymmetrical narrowing of the joint. The patient was given the choice of first mpj arthrodesis or Hemiarthroplasty with the BioPro First MPJ Hemi.

Surgical Notes

The subluxed Cartiva implant was removed, the void was filled with bone graft and slight remodeling of the metatarsal head was performed. A small portion (4-5mm) of the proximal phalanx was resected to allow for implantation of a BioPro Porous Coated First MPJ Hemi Implant.

Follow-Up

The patient had an uneventful post-op course and her pain was completely resolved. Range of motion was approximately 20 degrees dorsiflexion and 5 degrees plantarflexion with no pain. At 1-year post-op the patient is very happy and could ambulate without any difficulty.



Contributed by:
Fred Rahimi, D.P.M.
First Step Foot Care
Des Plaines, IL

BIOLOGICALLY ORIENTED PROSTHESES

BIOPRO



BioPro, Inc.
2929 Lapeer Road
Port Huron, MI 48060
www.bioproimplants.com