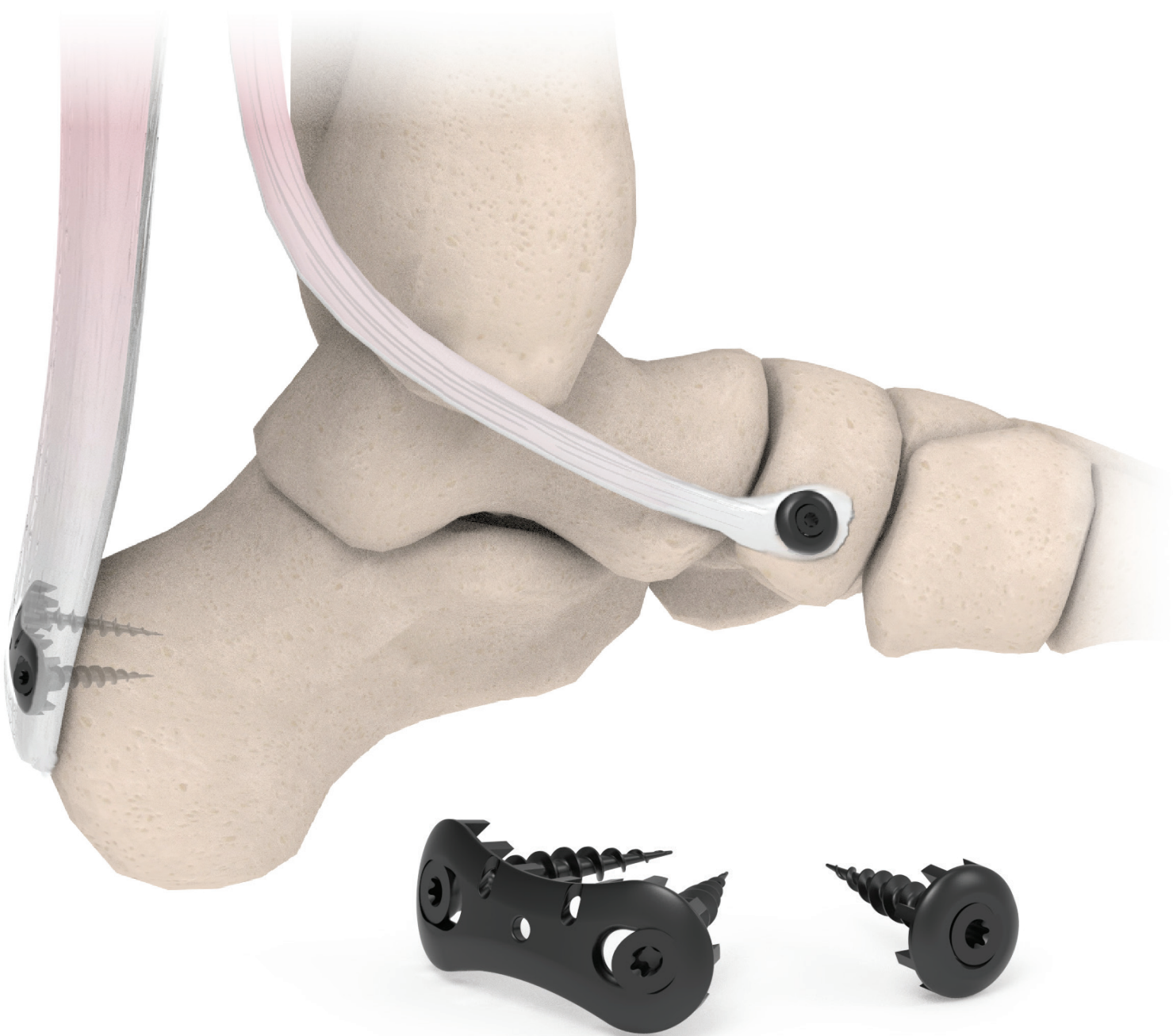


Tendon Anchor System

Soft tissue attachment simplified.

The BioPro® Tendon Anchor System (T.A.S.) is a toothed, titanium anchor designed for soft tissue reattachment to bone. The sutureless design simplifies soft tissue reattachment and allows for increased pull-out strength.¹



How it works.



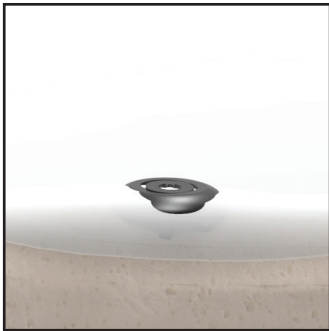
Approximate the holder onto the tendon



Insert a self-drilling screw through the holder



Tighten the screw until the anchor teeth contact bone

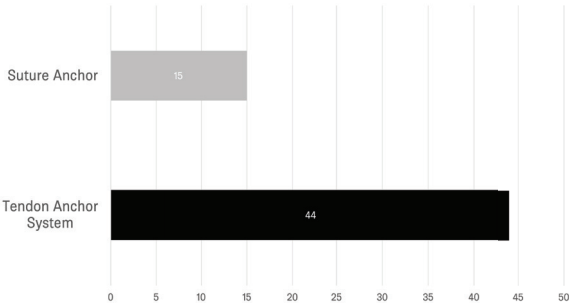


Anchor should sit flush with tendon surface

Benefits

- No suture required, eliminating the tendon-suture interface, the most common failure mode in soft tissue attachment.²
- Simple placement and fixation technique with no pre-drilling required, reducing OR time.[†]
- Provides greater surface area coverage resulting in 3 times greater pull-out strength vs standard suture anchors.¹
- Low-profile (1mm) anchors reduce soft tissue irritation.
- No tendon detachment required for implantation or removal.
- Blunt teeth prevent over-compression allowing for microcirculatory blood flow crucial to the healing process.

Average maximum loads to failure (lbfs)



Item #	Description	Sterile Kit	
20070	1-Hole 10mm Tendon Anchor System	(1) 10mm Anchor (1) Holder (1) T-7 Driver	(1) 3.0 x 15mm self-drilling screw (1) 3.0 x 20mm self-drilling screw
20159	2-Hole 26mm Tendon Anchor System	(1) 26mm Anchor (1) Olive K-wire (1) T-7 Driver	(2) 3.0 x 15mm self-drilling screw (2) 3.0 x 20mm self-drilling screw

1. Jill S. Kawalec-Carroll, PhD. Ohio College of Podiatric Medicine. (2014). Evaluation of a New Device for the Reattachment of the Achilles Tendon. Unpublished raw data.
2. Mode of failure for rotator cuff repair with suture anchors identified at revision surgery. Cummins, Craig A. et al. Journal of Shoulder and Elbow Surgery , Volume 12 , Issue 2 , 128 - 133
† Based on surgeon feedback

This content is provided as an educational tool only and is not meant as medical advice in the usage of specific BioPro products. A healthcare professional must use their professional judgment in making any final determinations in product usage and technique. The product's Instructions for Use, should always be reviewed prior to surgery. Postoperative management is patient-specific and dependent on the treating professional's assessment. Individual results will vary and not all patients will experience the same postoperative activity level or outcomes. This information does not constitute medical, legal, or any other type of professional advice and should not be relied upon as such. It is not to be redistributed, duplicated, or disclosed without the express written consent of BioPro, Inc.

