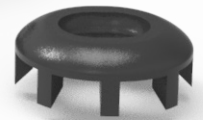


Tendon Anchor System

Streamline Procedures. Improve Results.

The BioPro® Tendon Anchor System (TAS) is a toothed, titanium anchor designed for soft tissue reattachment to bone. The system provides far greater surface compression than is possible with traditional suture anchor techniques, allowing for earlier patient ambulation†, while reducing OR time.

26MM TAS



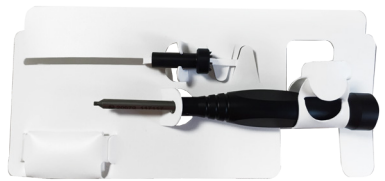
10MM TAS



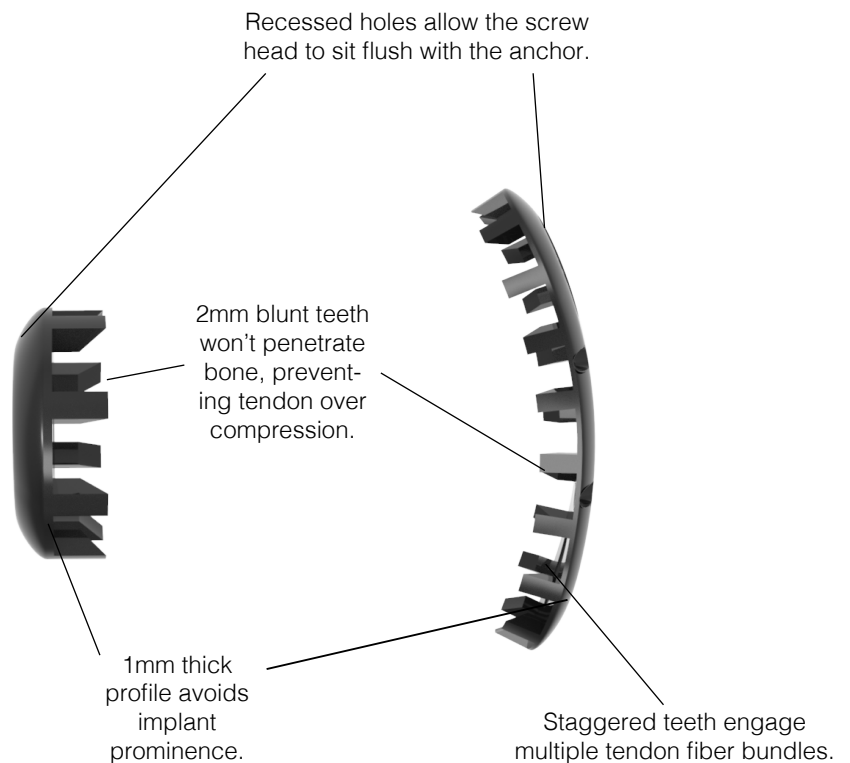
Tendon Anchor System

<p>183% stronger than standard suture anchors.</p>	<p>The average maximum load to failure of the Tendon Anchor System was reported at 44.01lbf compared to 15.52lbf of standard suture anchors.¹</p>
<p>Up to 30 days earlier patient ambulation.</p>	<p>The high pull out strength of the Tendon Anchor System provides the confidence to allow patients to ambulate in 10-12 days post-op[†], versus 6+ weeks² with standard suture anchor techniques.</p>
<p>Improved procedure efficiency.</p>	<p>The sterile packed system reduces OR set up time and eliminates instrument cleanup and sterilization costs³. The streamlined surgical procedure allows for faster soft tissue attachment.</p>

10mm Tendon Anchor System



26mm Tendon Anchor System



Visit www.bioproimplants.com or call us at (810) 982-7777

1. Jill S. Kawalec-Carroll, PhD. Ohio College of Podiatric Medicine. (2014). Evaluation of a New Device for the Reattachment of the Achilles Tendon. Unpublished raw data.
 2. Tendon Transfers. American Orthopaedic Foot & Ankle Society. (2017, May 16). Retrieved from www.aofas.org/footcaremd/treatments/Pages/TendonTransfers.aspx
 3. Cost Analysis and Surgical Site Infection Rates in Total Knee Arthroplasty Comparing Traditional vs. Single-Use Instrumentation Siegel, Geoffrey W. et al. The Journal of Arthroplasty, Volume 30, Issue 12, 2271 - 2274
 † DATA ON FILE.



+1-810-982-7777
 info@bioproimplants.com
 2929 Lapeer Road
 Port Huron, MI 48060

